



Roxtec CF 8/32 貫通部

アルミニウム製フレームの高密度ケーブル貫

Roxtec CF 8 および CF 32

は鋳造アルミニウム製のフレームで、さまざまなサイズのケーブルに対応できるシーリングモジュールと合わせて使用します。



- 防鼠
- 軽量
- 優れた面積効率
- 端末処理済みケーブル使用可

製品特性



IP/UL NEMA

設置構造



キャビネット & エンクロージ

取り付けタイプ



ボルト締め

規格と認証証明書

密性

- IP 66/67, UL/NEMA 4、4X、12、13

フレーム寸法

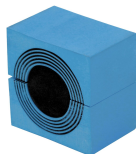
mm/kg

以下のフレームは一部です。フレームと構成品の全ラインナップについては、[roxtec.com](https://www.roxtec.com) をご覧ください。

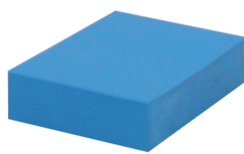
タイトル	フレームの開口部	バックスペース	外径 WxHxD	開口部寸法 w x h	重量	部品番号
CF 8	1	40 x 80	75 x 140 x 60	61(+0.5/-0.5) x 127(+0.5/-0.5)	0.6	CSF0000080035
CF 32	2	40 x 160	130 x 230 x 60	110(+0.5/-0.5) x 216(+0.5/-0.5)	1.4	CSF0000320035

シーリングコンポーネントのデータ

シーリングコンポーネント



Multidiamer ter™ 付き CM



CM ソリッドコンベン
ンセーションモジュール



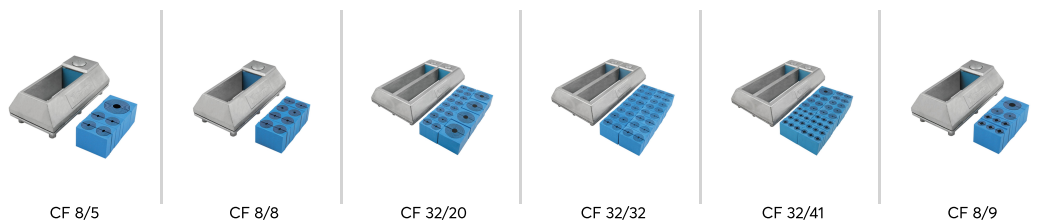
潤滑剤

詳細情報については、[roxtec.com](https://www.roxtec.com) をご覧ください。



設定済み貫通部キット

mm/kg



タイトル	構成	外径 WxHxD	開口部寸法 w x h	重量	部品番号
CF 8/5	1x (9.5-32.5), 4x (3.5-16.5)	75 x 140 x 59	61(+0.5/-0.5) x 127(+0.5/-0.5)	0.8	CKT8000000005
CF 8/8	8x (3.5-16.5)	75 x 140 x 59	61(+0.5/-0.5) x 127(+0.5/-0.5)	0.8	CKT8000000008
CF 32/20	4x (9.5-32.5), 16x (3.5-16.5)	130 x 230 x 59	110(+0.5/-0.5) x 216(+0.5/-0.5)	2	CKT3200000020
CF 32/32	32x (3.5-16.5)	130 x 230 x 59	110(+0.5/-0.5) x 216(+0.5/-0.5)	2	CKT3200000032
CF 32/41	1x (9.5-32.5), 24x (3.5-10.5), 16x (3.5-16.5)	130 x 230 x 59	110(+0.5/-0.5) x 216(+0.5/-0.5)	2	CKT3200000041
CF 8/9	2x (3.5-16.5), 1x (10.0-25.0), 6x (3.5-10.5)	75 x 140 x 59	61(+0.5/-0.5) x 127(+0.5/-0.5)	0.8	CKT0000000009

The product information provided by Roxtec does not release the purchaser of the Roxtec system, or part thereof, from the obligation to independently determine the suitability of the products for the intended process, installation and/or use.

Roxtec gives no guarantee for the Roxtec system or any part thereof and assumes no liability for any loss or damage whatsoever, whether direct, indirect, consequential, loss of profit or otherwise, occurred or caused by the Roxtec systems or installations containing components not manufactured by an authorized manufacturer and/or occurred or caused by the use of the Roxtec system in a manner or for an application other than for which the Roxtec system was designed or intended.

Roxtec expressly excludes any implied warranties of merchantability and fitness for a particular purpose and all other express or implied representations and warranties provided by statute or common law. User determines suitability of the Roxtec system for intended use and assumes all risk and liability in connection therewith. In no event shall Roxtec be liable for indirect, consequential, punitive, special, exemplary or incidental damages or losses.

The Roxtec products are offered and sold in accordance with the conditions of the Roxtec General Terms of Sales. The latest version of the Roxtec General Terms of Sales can be downloaded from <https://www.roxtec.com/en/about-us/about-roxtec/general-terms-of-sales/>

We reserve the right to make changes to the product and technical information without further notice. Any errors in print or entry are no claims for indemnity. The content of this publication is the property of Roxtec International AB and is protected by copyright.

This document was generated on: 2024-04-06